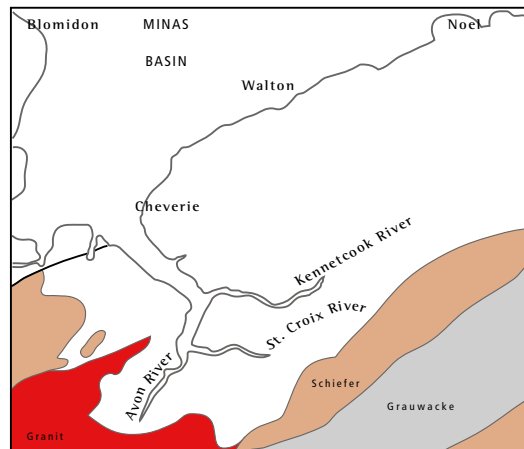
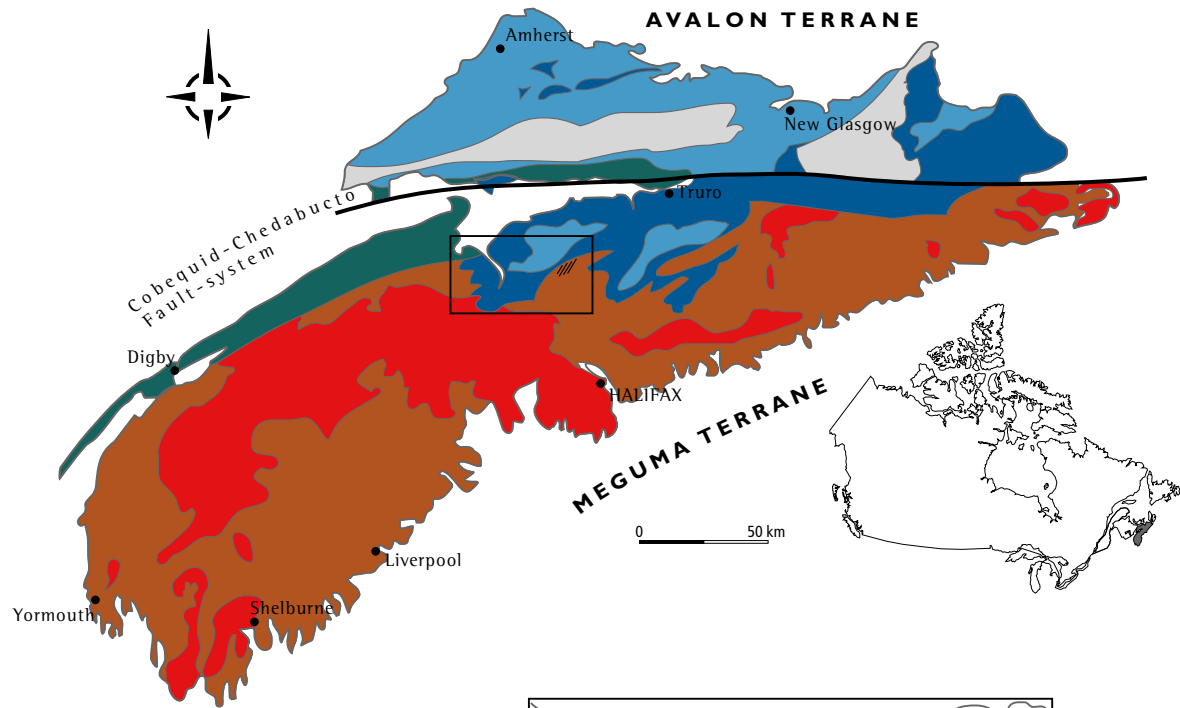









# VEREINFACHTE GEOLOGISCHE KARTE VON NOVA SCOTIA



## LEGENDE

- |   |  |   |   |
|---|--|---|---|
|  | <b>LOWER CARBONIFEROUS</b><br>(Sandstone, Limestone, Gypsum, Anhydrite, Salt, Shale, Conglomerate)   |  | <b>IGNEOUS ROCKS</b><br>(Granite, Granodiorite, Diorite)                    |
|  | <b>CAMBRIAN-DEVONIAN</b><br>(Slate, Quartzite, Schist, Gneiss, Volcanic Rocks, Iron Formation)   |  | <b>UPPER CARBONIFEROUS</b><br>(Sandstone, Shale, Coal Seams, Conglomerates) |
|  | <b>PRECAMBRIAN-DEVONIAN (AVALON TERRANE)</b><br>(Gneiss, Schist, Marble, Amphibolite, Slate, Quartzite, Shale, Limestone, Sandstone, Volcanic and Plutonic Rocks, Conglomerates) |  | <b>TRIASSIC-JURASSIC</b><br>(Limestone, Sandstone, Basalt, Conglomerates)   |
|   |   | <b>Schiefervorkommen</b>  |   |

von Dipl.-Geol. Jörn Wichert (2004)